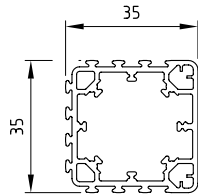
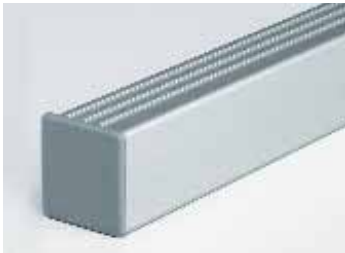


inoven

... it's easy with the right system

New Products 1 | 2005

profiles



Applies to all inoventi profiles:

Colour: silver

Material: aluminium, anodised

Length: 2.5 m/piece

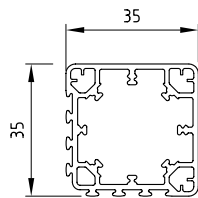
Profile V35x35 1S

1 off

order no.:1000834

Cut-to-size (price/m)

order no.:1000862



Profile V35x35 2S 90

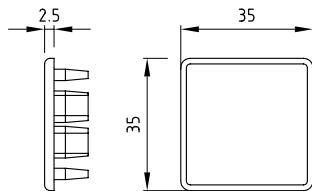
1 off

order no.:1000837

Cut-to-size (price/m)

order no.:1000863

caps

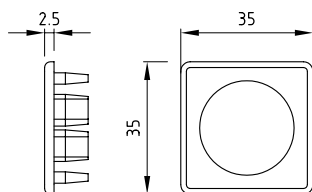


Cap V35x35 S

1 off

order no.:1000883

For Profile V35x35 1S and
Profile V35x35 2S 90.



Cap V35x35 SB

1 off

order no.:1000884

For Profile V35x35 1S and
Profile V35x35 2S 90.
For use in conjunction
with Adjustable Feet,
Castors or Profile Bushes.

light fittings



Applies to all LED Flex OS models:

Linear LED module ready for immediate connection. Each strip light is equivalent to a set of 10 LEDs mounted on a flexible PCB with self-adhesive tape on the rear. Best combined with Panel Frame 3-8 (order no. 1000013) or attached direct to profile.

Dims. each (L x B x H) 140 x 10 x 2.4 mm.

LED Flex OS

Cut-to-size (price each)

blue

order no.:1000905

yellow

order no.:1000901

green

order no.:1000903

red

order no.:1000899

white

order no.:1000907



Concealed LED converter 230-240/24

1 off

order no.:1000909

Can be integrated in all profiles from size V35x35 and R38 and above.

Dims. (L x B x H) 182 x 20 x 20 mm.



LED mains adapter 230-240/24 OS

1 off

order no.:1000908

Rated voltage 20 V

Modular output 20 W

Dims. (L x B x H) 109 x 50 x 35 mm.

Technical specifications

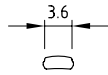
Rated input voltage 230 V (+/-10 %)

at a mains line frequency of 0/50/60 Hz.

Ambient temperature: -20 to + 45 °C.

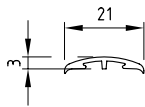
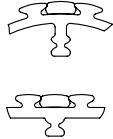
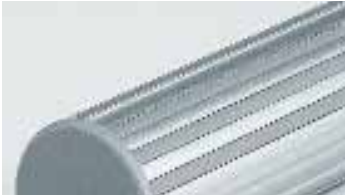
New Products 1 | 2005

accessories



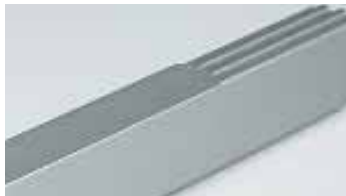
Cover Profile 3.6

1 off 2.5 m
order no.:1000803

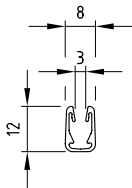


Cover Profile S21

1 off 2.5 m
order no.:1000831

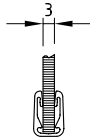


Use in conjunction with Profile V21x35 or Profile V21x70. Can be used as clothes-hanger profile or cover to protect profile



Edging Profile S3

1 off 2 m
order no.:1000812
Cut-to-size (price/m)
order no.:1000814





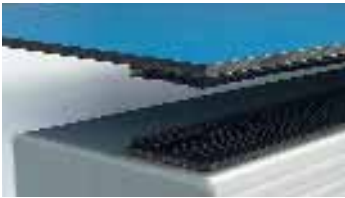
Dual Lock 3M® hook-and-loop tape

1 roll 45.7 m

order no.:1000724

Cut-to-size (price/m)

order no.:1000823



Due to the powerful holding strength, ideal for simple, removable attachment of panels to profiles, e.g. in exhibition booths.

Please note: degrease profiles and panels before attempting to apply hook-and-loop tape.

centres worldwide



inoventi centres offer you

- qualified advice
- services
- supply of all components from stock
- internal and external workshops
- contact to service partners



inoventi centres are currently established in the following countries:

Centres in Asia

- United Arab Emirates

Centres in Europe

- Germany
- Belgium
- Italy
- Lithuania
- Luxembourg
- Malta
- Netherlands
- Russia
- Switzerland
- Czech Republic



index

Cover Profile 3.64
Cover Profile S214
Dual Lock hook-and-loop tape 5
Cap V35x35 S2
Cap V35x35 SB2
LED technology3
Profile V35x35 1S2
Profile V35x35 2S 902

For further information, visit: www.inoventi.com

inoventi:

This catalogue is intended only for the use of the recipient. It remains the property of inoventi in all respects both in whole and in part.

It is not permitted to reproduce any part of the catalogue nor to copy any part of the catalogue or its illustrations or its design.

Throughout this catalogue, all the technical details and dimensions, including those given in the illustrations and drawings, are approximate and non-binding. Designs are subject to improvements without prior notice.

E & OE

All deliveries are made on the basis of our currently applicable terms and conditions.

January 2005
© inoventi GmbH
All rights reserved.

inoventi GmbH

Löhdorfer Strasse 156–176
42699 Solingen, Germany
Tel.: +49 212.38 313-0
Fax: +49 212.38 313-29
info@inoventi.com
www.inoventi.com

Your inoventi centre

