

inoven

... it's easy with the right system

New Products 1 | 2006

profiles



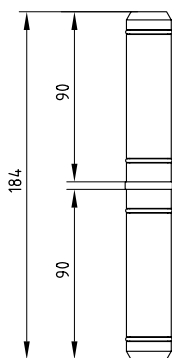
Please note:

The effective (usable) length of the profiles 5.0 m long is 5000 mm, the packaged length is 5080 mm. The profiles have so-called contact areas at both ends which have to be cut off by the user.

Profiles which are given as 2.5 m long do not have these contact areas and have an effective length of 2500 mm.

Designation	Order no.	Quantity
Profile R38	1000946	1 off 5 m
Profile R38x80	1000985	1 off 5 m
Profile R74	1000878	1 off 5 m
Profile V21x35	1000944	1 off 5 m
Profile V35x35	1000983	1 off 5 m
Profile V35x70	1000942	1 off 5 m
Profile V35x35 15	1001039	1 off 5 m
Profile V35x35 S90	1001041	1 off 5 m
Profile V21x70	1001036	1 off 5 m

connectors



Slot-in connector R24

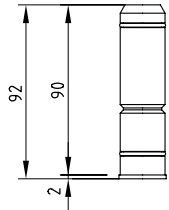
Colour: silver

Material: metal

1 off

order no.: 1000998

Used as profile extension. The Connector can be inserted in all profiles with a cross-sectional size of Profile V35x35 or Profile R38 or larger. The profiles have to be fitted with corresponding caps B beforehand. The profiles can still be turned relative to each other.



Slot-in connector R24 L90

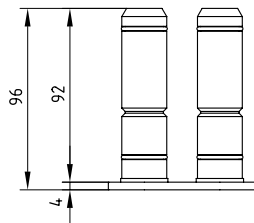
Colour: silver
Material: metal

1 off
order no.: 1001003

The Connector can be inserted in all profiles with a cross-sectional size of Profile V35x35 or Profile R38 or larger. The profiles have to be fitted with corresponding caps B beforehand.

Can be directly attached to all inoventi panels using M8 countersunk screws.

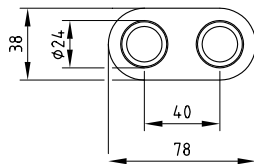
Can also be attached to other elements via the M8 thread.



Slot-in connector R24 2L90

Colour: silver
Material: metal

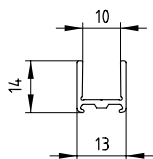
1 off
order no.: 1001006



Slot-in parallel connector for Profile R38 and Profile V35x35. The Connector can be inserted in all profiles with a cross-sectional size of Profile V35x35 or Profile R38 or larger. The profiles have to be fitted with corresponding caps B beforehand. The profiles can still be turned relative to each other.

New Products 1 | 2006

fasteners



Panel Frame 10 AL

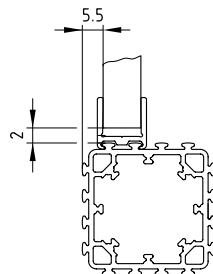
Colour: silver
Material: aluminium, anodised

1 off 2.5 m

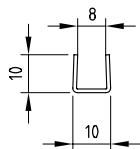
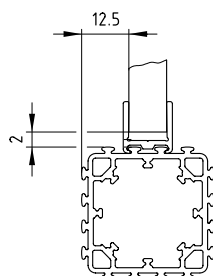
order no.: 1000969

Cut-to-size (price/m)

order no.: 1000970



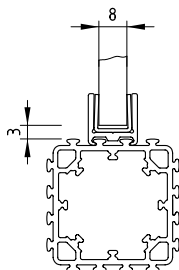
Panel Frame 10 AL can be mounted on all profiles.
For mounting panels with a thickness of 10 mm.



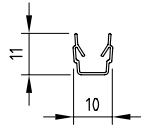
Frame Profile 10x10x1 K

Designation	Order no.	Quantity
-------------	-----------	----------

Black	1001009	1 off 2.6 m
Grey	1001010	1 off 2.6 m



In conjunction with Panel Frame 10 AL for mounting
8 mm panels.



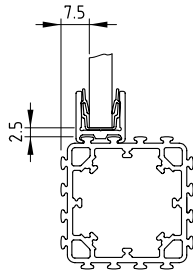
Frame Profile 6 KN

Colour: transparent

Material: plastic

1 off 2.5 m

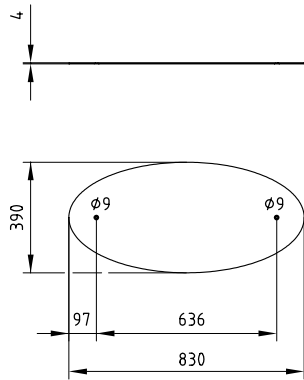
order no.: 1001008



In conjunction with Panel Frame 10 AL for mounting 6 mm panels. Specially designed for glass panels.

New Products 1 | 2006

feet/castors

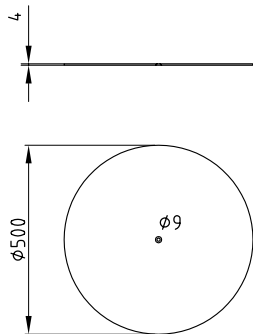


Panel O390x830

Colour: grey
Material: metal, lacquered

1 off

order no.: 1000993



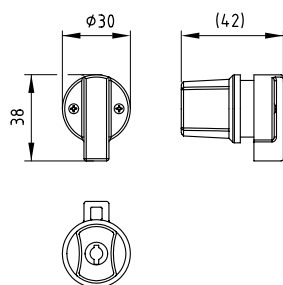
Panel R500

Colour: grey
Material: metal, lacquered

1 off

order no.: 1000988

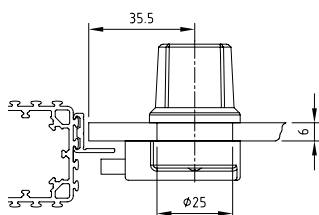
fittings



Glass door lock G1

Colour: grey
Material: metal, lacquered

1 off
order no.: 1000992



For use as a lock on showcase or cabinet doors.
A 10 mm section of a Panel Frame 10 AL is used as the endstop. One divider piece has to be removed.

tools



Samples box

1 off
order no.: 1000741

The samples box contains all the key system components. This allows the Building Kit System to be demonstrated quickly and comprehensively.



Hand bit-holder, flexible

1 off
order no.: 1000990

The flexible blade shaft enables hard-to-access screws to be more easily tightened and removed.

centres worldwide



inoventi centres offer you

- qualified advice
- services
- supply of all components from stock
- internal and external workshops
- contact to service partners



inoventi centres are currently established in the following locations:

Centres in Asia

- Korea
- United Arab Emirates

Centres in Europe

- Italy
- Malta
- Russia
- Switzerland
- Czech Republic

German centres

- Schönheide
- Itzehoe
- Solingen
- Mössingen



index

Hand bit-holder, flexible	7
Panel Frame 10 AL	4
Frame Profile 6 KN	5
Frame Profile 10x10x1 K GR	4
Frame Profile 10x10x1 K SW	4
Glass door lock G1	7
Samples box	7
Panel O390x830	6
Panel R500	6
Profile R38	2
Profile R38x80	2
Profile R74	2
Profile V21x35	2
Profile V35x35	2
Profile V35x70	2
Slot-in connector R24	2
Slot-in connector R24 L90	3
Slot-in connector R24 2L90	3

inoventi

This catalogue is intended only for the use of the recipient. It remains the property of inoventi in all respects both in whole and in part.

It is not permitted to reproduce any part of the catalogue nor to copy any part of the catalogue or its illustrations or its design.

Throughout this catalogue, all the technical details and dimensions, including those given in the illustrations and drawings, are approximate and non-binding. Designs are subject to improvements without prior notice.

E & OE

All deliveries are made on the basis of our currently applicable terms and conditions.

May 2006
©inoventi GmbH
All rights reserved.

For further information, visit: www.inoventi.com

inoventi GmbH

Löhdorfer Strasse 156–176
42699 Solingen, Germany
Phone +49 212 38 313-0
Fax +49 212 38 313-29
info@inoventi.com
www.inoventi.com

Your inoventi centre

